



# GSC2 Polyclonal Antibody

<b>Catalog No</b>	YP-Ab-15757
<b>Isotype</b>	IgG
<b>Reactivity</b>	Human;Mouse
<b>Applications</b>	WB;ELISA
<b>Gene Name</b>	GSC2
<b>Protein Name</b>	Homeobox protein goosecoid-2
<b>Immunogen</b>	The antiserum was produced against synthesized peptide derived from human GSC2. AA range:131-180
<b>Specificity</b>	GSC2 Polyclonal Antibody detects endogenous levels of GSC2 protein.
<b>Formulation</b>	Liquid in PBS containing 50% glycerol, 0.5% BSA and 0.02% sodium azide.
<b>Source</b>	Polyclonal, Rabbit,IgG
<b>Purification</b>	The antibody was affinity-purified from rabbit antiserum by affinity-chromatography using epitope-specific immunogen.
<b>Dilution</b>	Western Blot: 1/500 - 1/2000. ELISA: 1/20000. Not yet tested in other applications.
<b>Concentration</b>	1 mg/ml
<b>Purity</b>	≥90%
<b>Storage Stability</b>	-20°C/1 year
<b>Synonyms</b>	GSC2; GSCL; Homeobox protein goosecoid-2; GSC-2; Homeobox protein goosecoid-like; GSC-L
<b>Observed Band</b>	25kD
<b>Cell Pathway</b>	Nucleus .
<b>Tissue Specificity</b>	Detected in adult testis and pituitary, and in 9-10 week fetal tissue (thorax). Probably expressed in other tissues at low levels.
<b>Function</b>	developmental stage:Expressed in early human development as well as in a limited number of adult tissues.,disease:May play a part in the etiology of the velocardiofacial/DiGeorge syndrome (VCFS/DGS), a developmental disorder characterized by structural and functional palate anomalies, conotruncal cardiac malformations, immunodeficiency, hypocalcemia, and typical facial anomalies. Most cases result from a deletion of chromosome 22q11.2 (the DiGeorge syndrome chromosome region, or DGCR).,function:May have a role in development. May regulate its own transcription. May bind the bicoid consensus sequence TAATCC.,similarity:Belongs to the paired homeobox family. Bicoid subfamily.,similarity:Contains 1 homeobox DNA-binding domain.,tissue specificity:Detected in adult testis and pituitary, and in 9-10 week fetal tissue (thorax). Probably expressed in other tissues at low levels.,



## Background

Goosecoidlike (GSCL), a homeodomain-containing gene, resides in the critical region for VCFS/DGS on 22q11. Velocardiofacial syndrome (VCFS) is a developmental disorder characterized by conotruncal heart defects, craniofacial anomalies, and learning disabilities. VCFS is phenotypically related to DiGeorge syndrome (DGS) and both syndromes are associated with hemizygous 22q11 deletions. Because many of the tissues and structures affected in VCFS/DGS derive from the pharyngeal arches of the developing embryo, it is believed that haploinsufficiency of a gene involved in embryonic development may be responsible for its etiology. The gene is expressed in a limited number of adult tissues, as well as in early human development. [provided by RefSeq, Jul 2008],

## matters needing attention

Avoid repeated freezing and thawing!

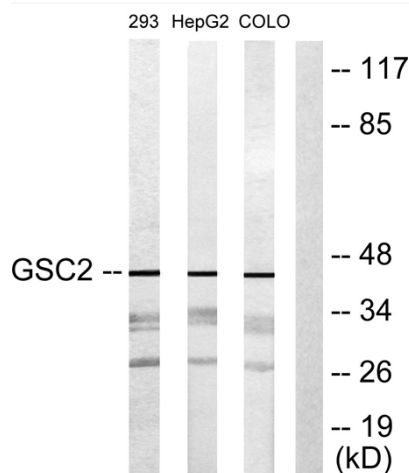
## Usage suggestions

This product can be used in immunological reaction related experiments. For more information, please consult technical personnel.

## Products Images



Western Blot analysis of various cells using GSC2 Polyclonal Antibody diluted at 1:1000 cells nucleus extracted by Minute TM Cytoplasmic and Nuclear Fractionation kit (SC-003, Invent biotech, MN, USA).



Western blot analysis of lysates from 293, HepG2, and COLO205 cells, using GSC2 Antibody. The lane on the right is blocked with the synthesized peptide.